



## MDM150 Marine Fire Rated Pathways

*Cable raceway device consisting of heavy gauge steel shell with self-adjusting intumescent liners to allow cables to pass through fire-rated bulkheads and decks on ships while providing a maintenance-free alternative to traditional cable transits in non-water-tight divisions*

### PRODUCT FEATURES:

- Tested to IMO FTP Code 2010, Annex 1, Part 3 (Class A-0 through A-60, Bulkheads and Decks)
- Most cost effective solution for new cable installations
- Self-adjusting cable sealing liners allow for easy retrofit of cable moves, additions, and changes for existing installations
- Modular units can be installed together with available gang plates
- Rapid intumescent expansion under fire conditions quickly seals off the path for fire, gases, and smoke
- Allows 0 to 100% visual fill of cables
- Empty devices can be installed for future use
- Maximizes volume of cable that can be installed into a given space while reducing the overall footprint
- Protection of cable jacketing and insulation materials
- Galvanized steel shell with marine-grade powder coating used with single or gang plates
- Military-grade fabric sealing boot provides supplemental sealing to meet DNV requirements
- Flexible intumescent liners accommodates vibration
- Resistant to aging and weathering
- Single Plate Kit (Cat. No.: MDM150C) for use in A-0 through A-60 Aluminum Divisions

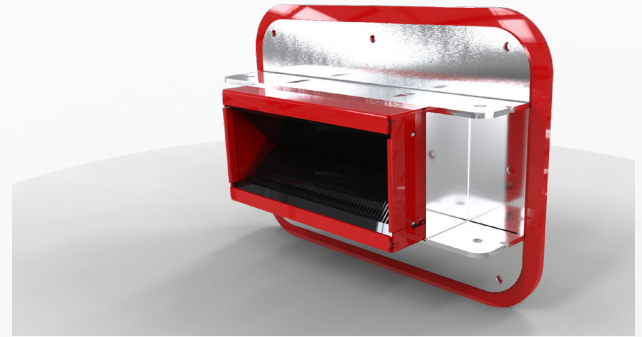
### WARRANTY INFORMATION:

[www.stimarine.com/legal/warranty](http://www.stimarine.com/legal/warranty)

MADE IN THE USA – COPYRIGHT © 2018 STI MARINE FIRESTOP,  
A DIVISION OF SPECIFIED TECHNOLOGIES INC.

### MAINTENANCE:

Maintenance free. Observed damage can be repaired per the original approved design.



### THIRD PARTY APPROVALS:



### PHYSICAL PROPERTIES:

Property – As Supplied	Value
	<b>Device</b>
<b>Shell Composition:</b>	1.5 mm thick (0.059 in.) galvanized steel
<b>Flange Composition:</b>	Nom. 50 KSI ABS-Approved mild steel
<b>Powder Coating:</b>	Marine-Grade
<b>Physical Dimensions:</b>	75 x 150 x 150 mm (3 x 6 x 6 in.)
<b>Cable Loading Area:</b>	77 cm <sup>2</sup> (12.0 sq. in.) Max. 44 mm (1.75 in.) diam.
<b>Expansion Begins :</b>	160°C (320°F)
<b>Expansion Volume:</b>	800%
<b>In-Service Temperature:</b>	-23°C to 49°C (-10°F to 120°F)
<b>Storage Temperature:</b>	<49°C (120°F)
<b>Shelf Life:</b>	No limit
	<b>Sealing Boot - for DNV Requirements Only</b>
<b>Property</b>	High temperature, flame retardant silicone rubber coated fabric.



## MDM150 Marine Fire Rated Pathways

### INSTALLATION INSTRUCTIONS:

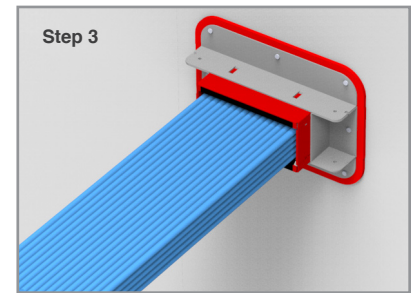
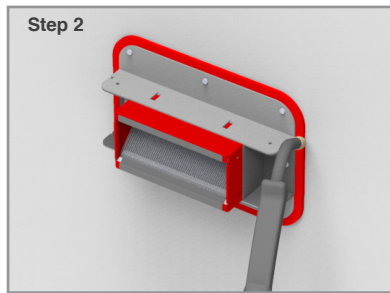
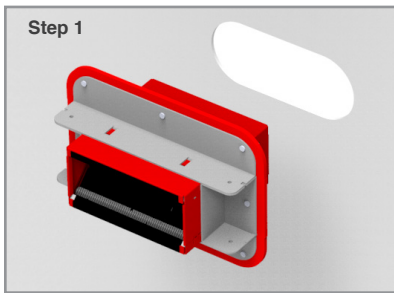
General Notes: Read Safety Data Sheets (SDS) and product label for safe handling.

**Step 1:** Cut a circular or square opening into steel deck or bulkhead.

**Step 2:** Insert device(s) through opening and secure the plate to deck or bulkhead by means of welds.

**Step 3:** Install cables through pathway

**Note:** These general instructions are specific to model number MDM150A for steel divisions. For other configurations and divisions please refer to appropriate installation instructions.



### ORDERING INFORMATION:

EZ-Path® Marine Fire Rated Pathways are available from STI Marine Distributors. Contact regional STI office for more information.

UPC# 730573	CAT NO.	DESCRIPTION	CASE QTY	WEIGHT
40005	MDM150A	Marine 150 Single Solid Plate Kit w/ Device	1	3.6 kg (8.0 lbs)
40006	MDM150B	Marine 150 Four Gang Solid Plate Kit w/ 4 Devices	1	8.8 kg (19.5 lbs)
44010	MDM150C	Marine 150 Single Solid Plate Kit w/Device for Aluminum Divisions	1	2.0 kg (4.5 lbs)
40008	MDM150Y	Marine 150 Single Solid Plate Kit w/ Device – For DNV Requirements	1	3.8 kg (8.5 lbs)
40009	MDM150Z	Marine 150 Four Gang Solid Plate Kit w/ 4 Devices - For DNV Requirements	1	9.7 kg (21.5 lbs)